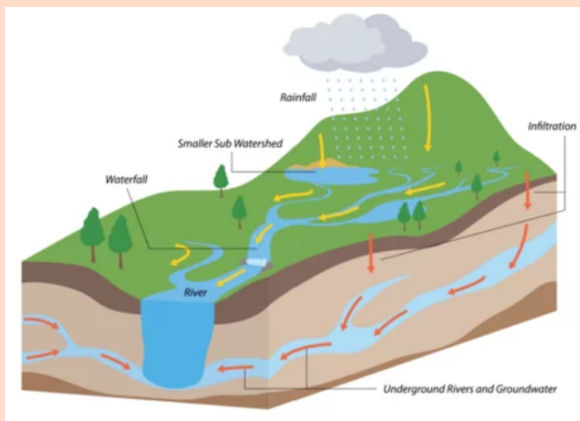
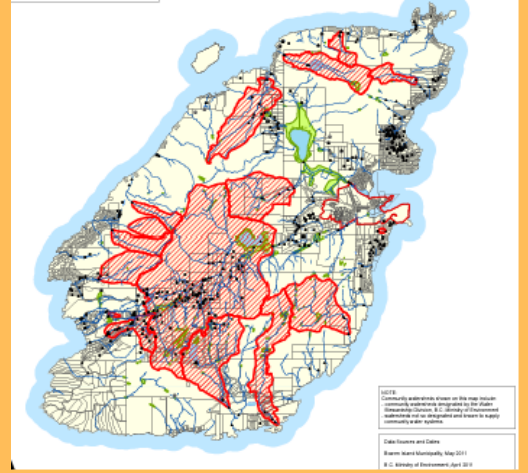


# DEVELOPMENT WITHIN COMMUNITY WATERSHEDS

Within the Bowen Island Municipality, Community Watersheds are included in the Watershed Aquifer, and Stream Protection Development Permit area; Community Watersheds are depicted on schedule B-4 of the Official Community Plan. The Bowen Island Municipality bowmap (<https://bowmap.bowenlandmunicipality.ca/>) is another resource for information on Development Permit areas.



Therefore, any development (building construction, demolition, land alteration, tree removal, or subdivision of land) within an area identified as a Community Watershed requires an environmental assessment prepared by a Qualified Environmental Professional for a Development Permit application.

Some activities may be exempt, such as maintaining existing landscaping, building renovations or maintenance of impermeable ground cover within an existing footprint, or removal of hazard trees and invasive species under the guidance of a QEP.



## HAVE A QUESTION?

CONTACT MICAELE FLORENDO, QEP, RPBO,  
PRINCIPAL BIOLOGIST AT 604.838.2321 OR  
MICAELE@MADDISON-CONSULTANTS.COM

